

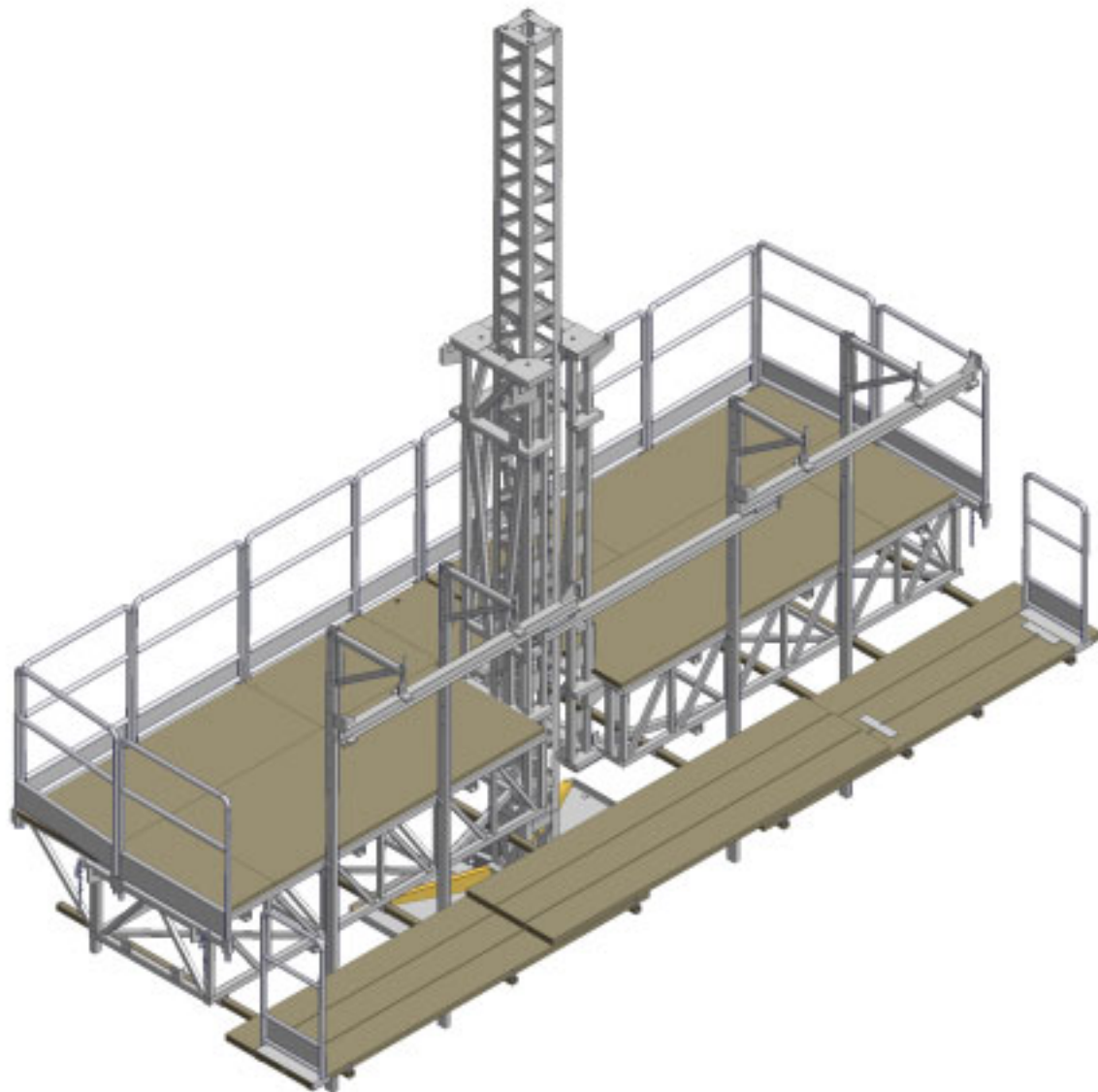
MONORAIL

User's guide

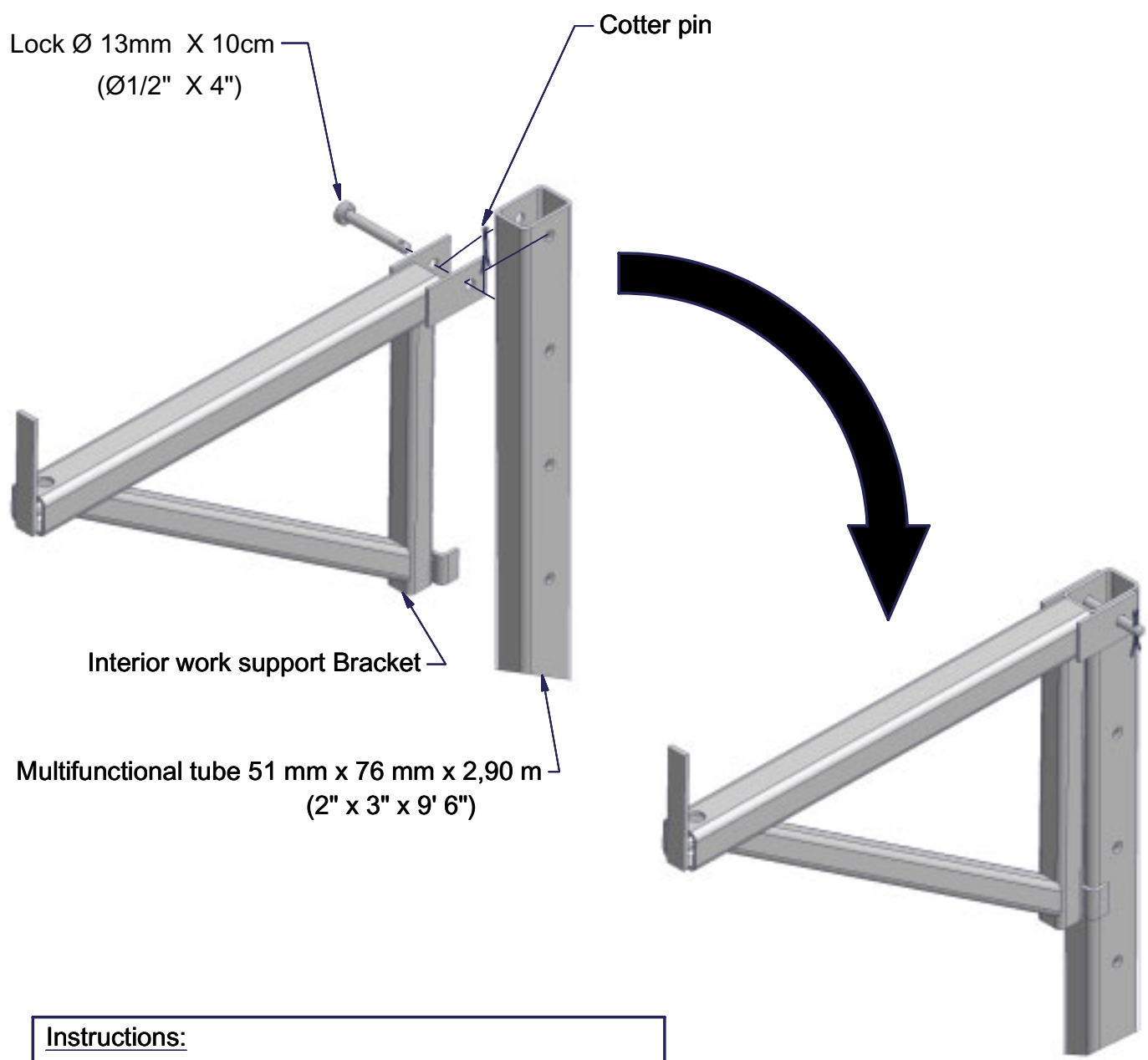
LES PRODUITS

FRACO

PRODUCTS



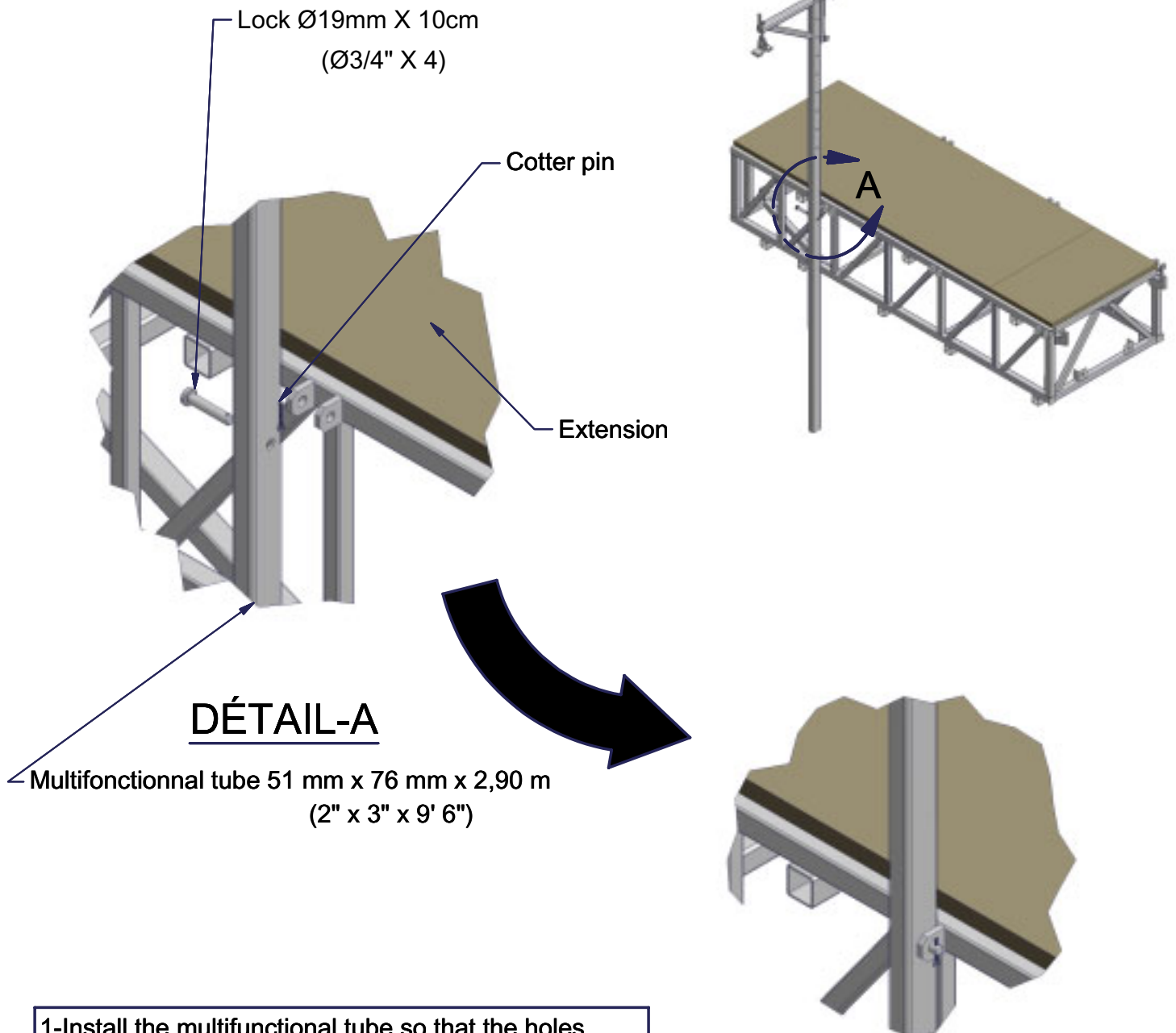
Installing the Interior work support Bracket with the multifunctional tube



Instructions:

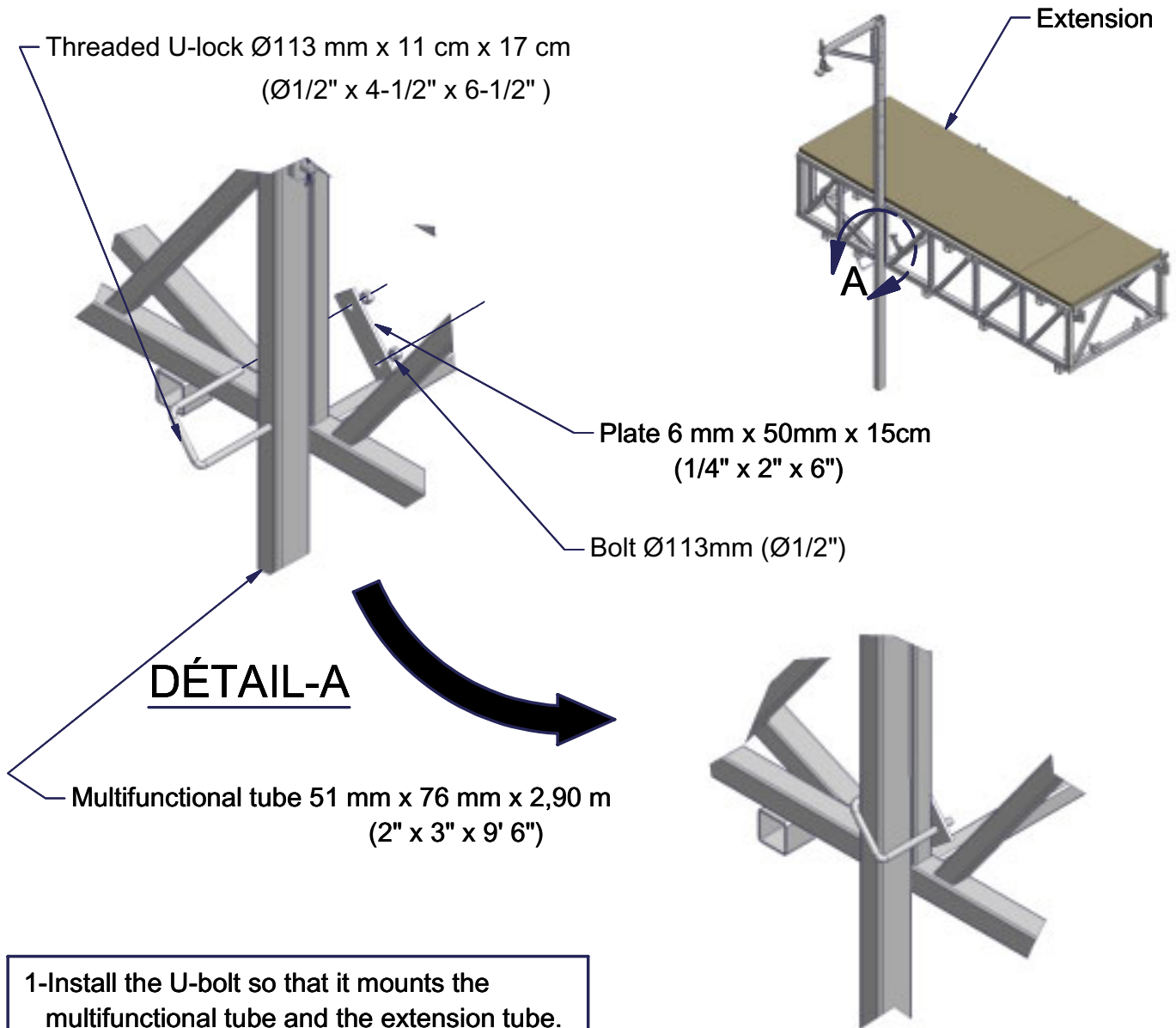
- 1-Insert the Interior work support Bracket on the multifunctional tube so that the holes are aligned.
- 2-Install the lock in the holes and secure it with a cotter pin.

Installing the multifunctional tube with the extension



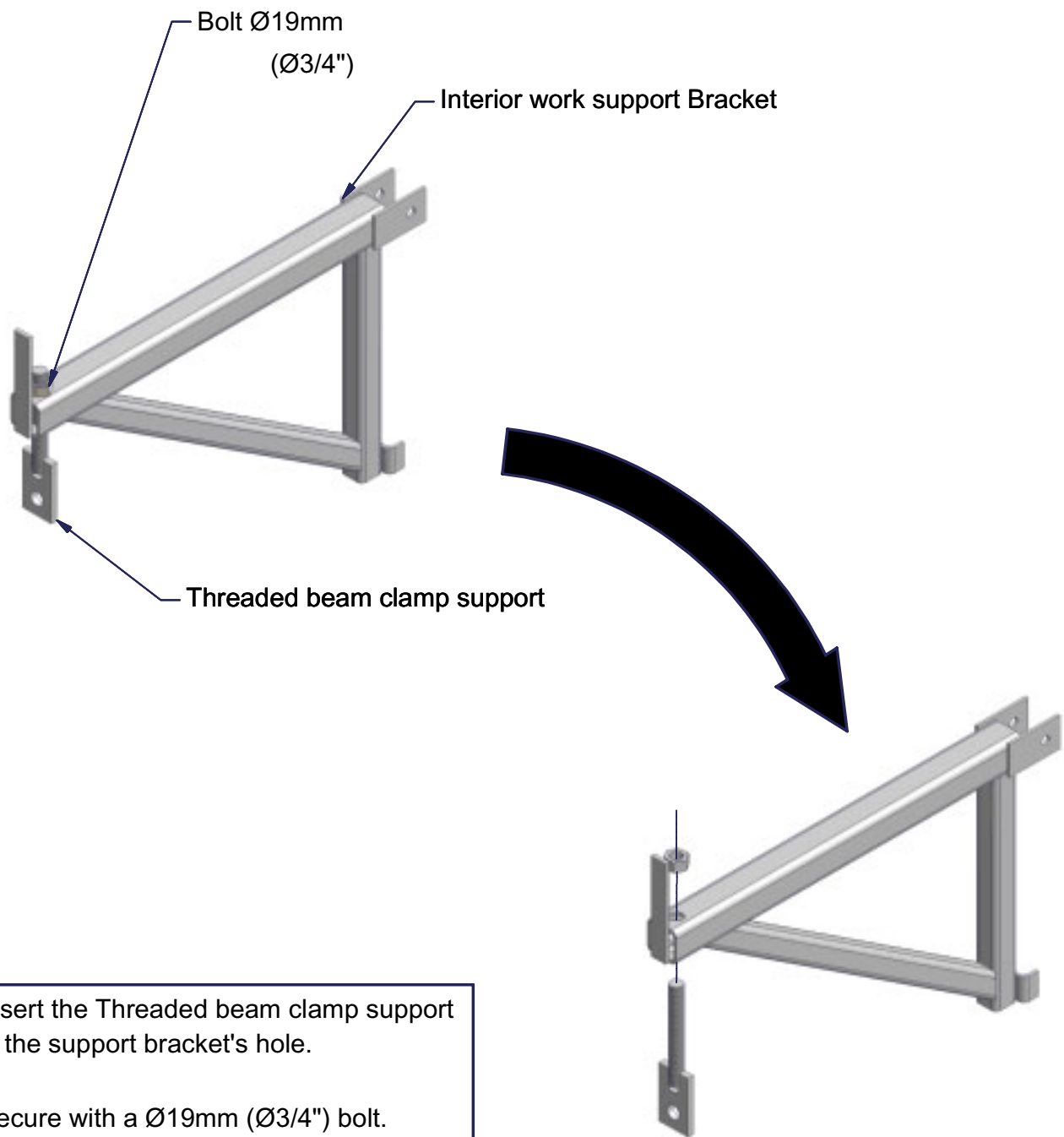
- 1-Install the multifunctional tube so that the holes are aligned.
- 2-Insert the lock in the holes of the multifunctional tube and lock it with a cotter pin.

Install the threaded U-bolt

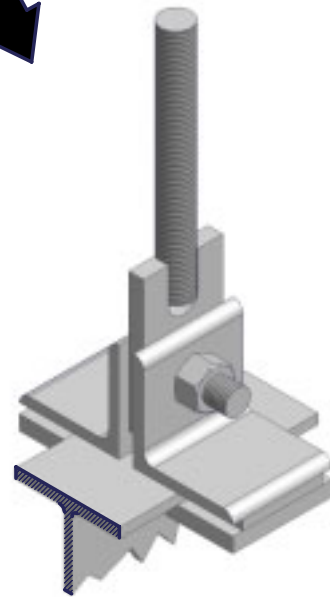
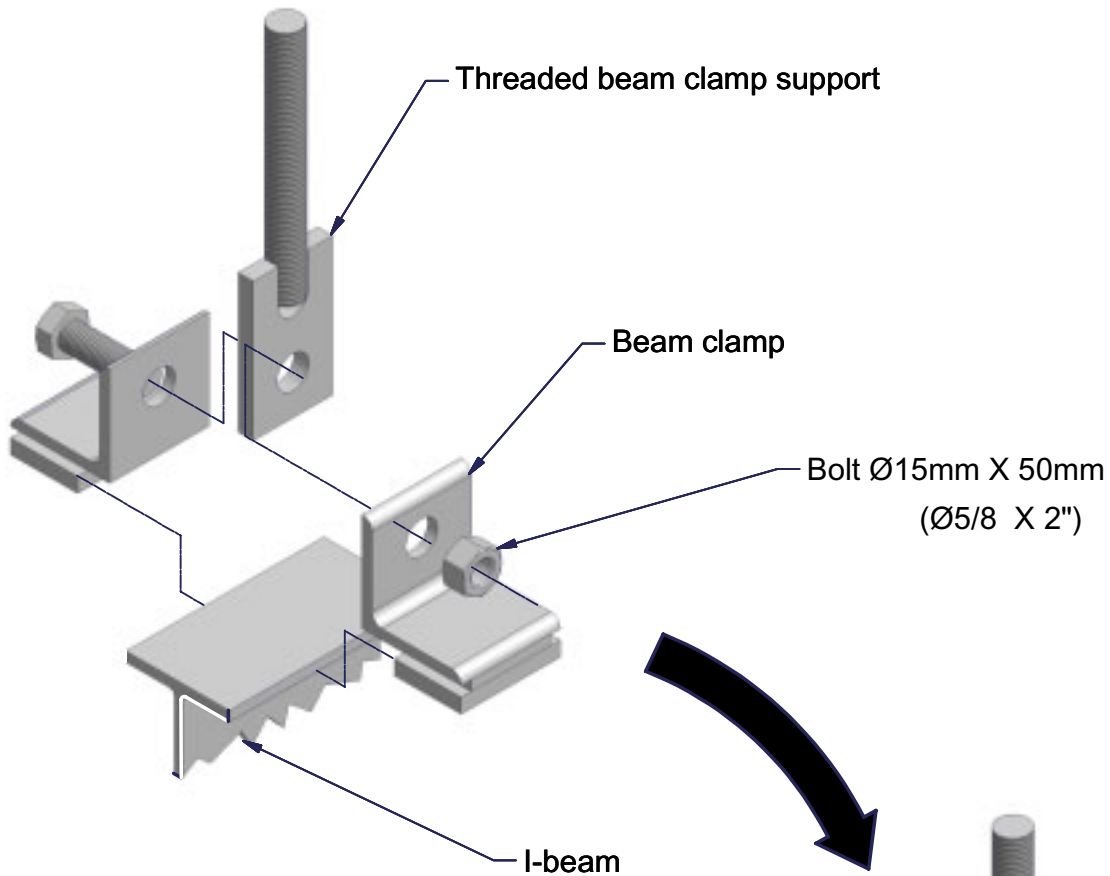


- 1-Install the U-bolt so that it mounts the multifunctional tube and the extension tube.
- 2-Install the plate on the U-bolt behind the extension tube.
- 3-Lock the plate with 2 screws.

Installing the threaded beam clamp support

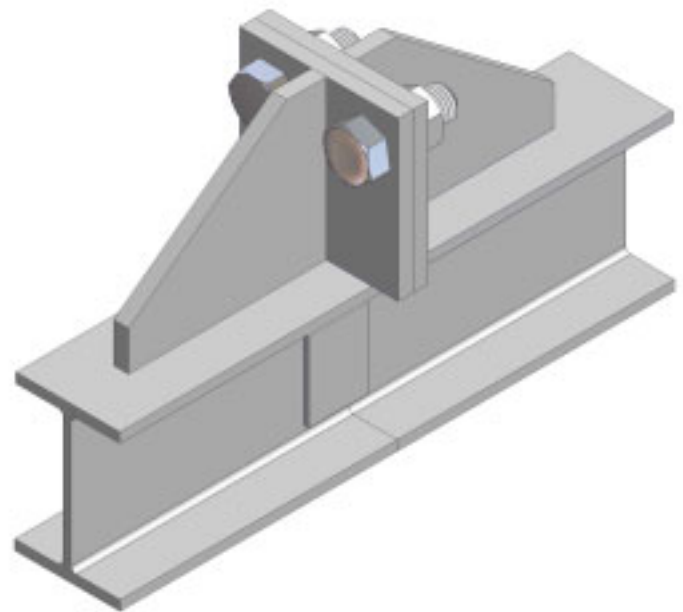
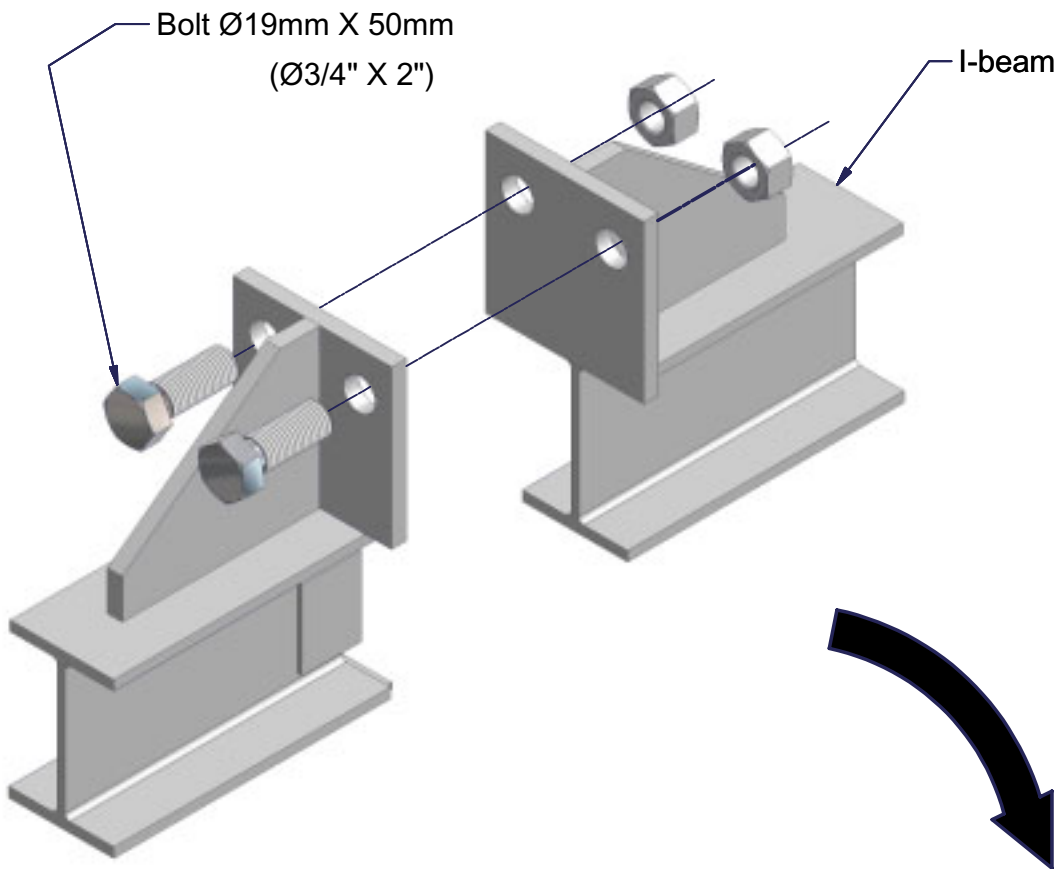


Installing the I-beam



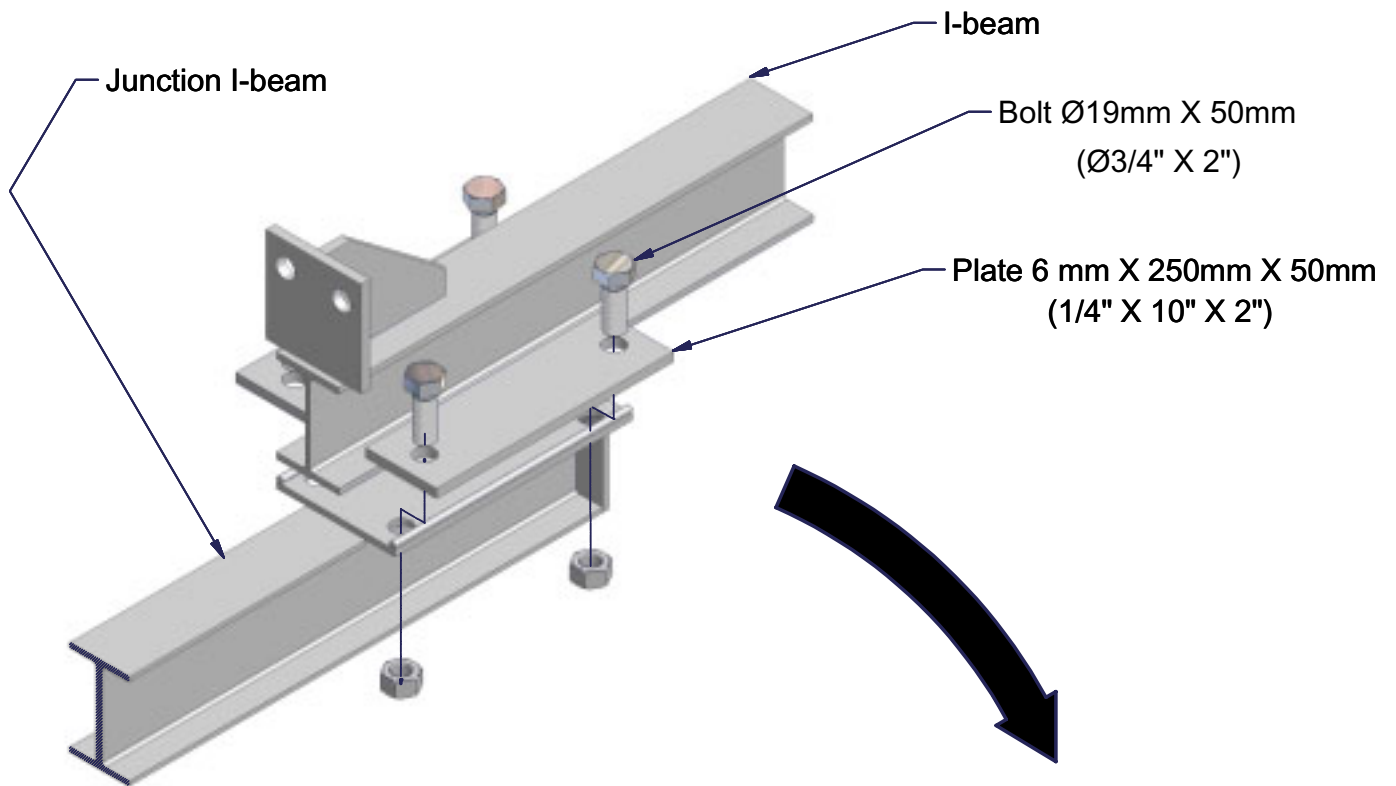
- 1-Clamp the I-beam with the 2 beam clamp so that the holes are aligned.
- 2-secure them to the threaded beam clamp with a bolt.

assembling multiple I-beams



- 1-Place both I-beam as showed.
- 2-Secure with 2 bolts
Ø19mm X 50mm (Ø3/4" X 2").

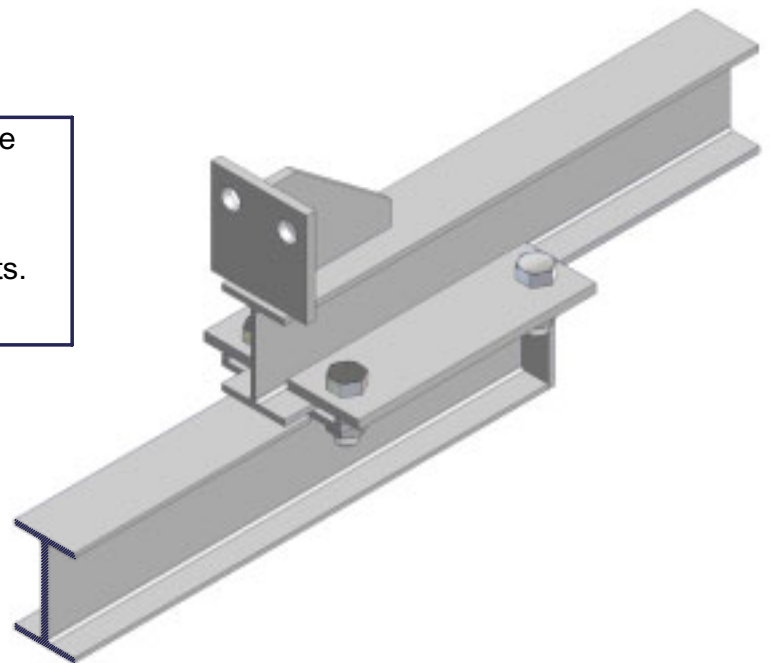
Installing the junction I-beam



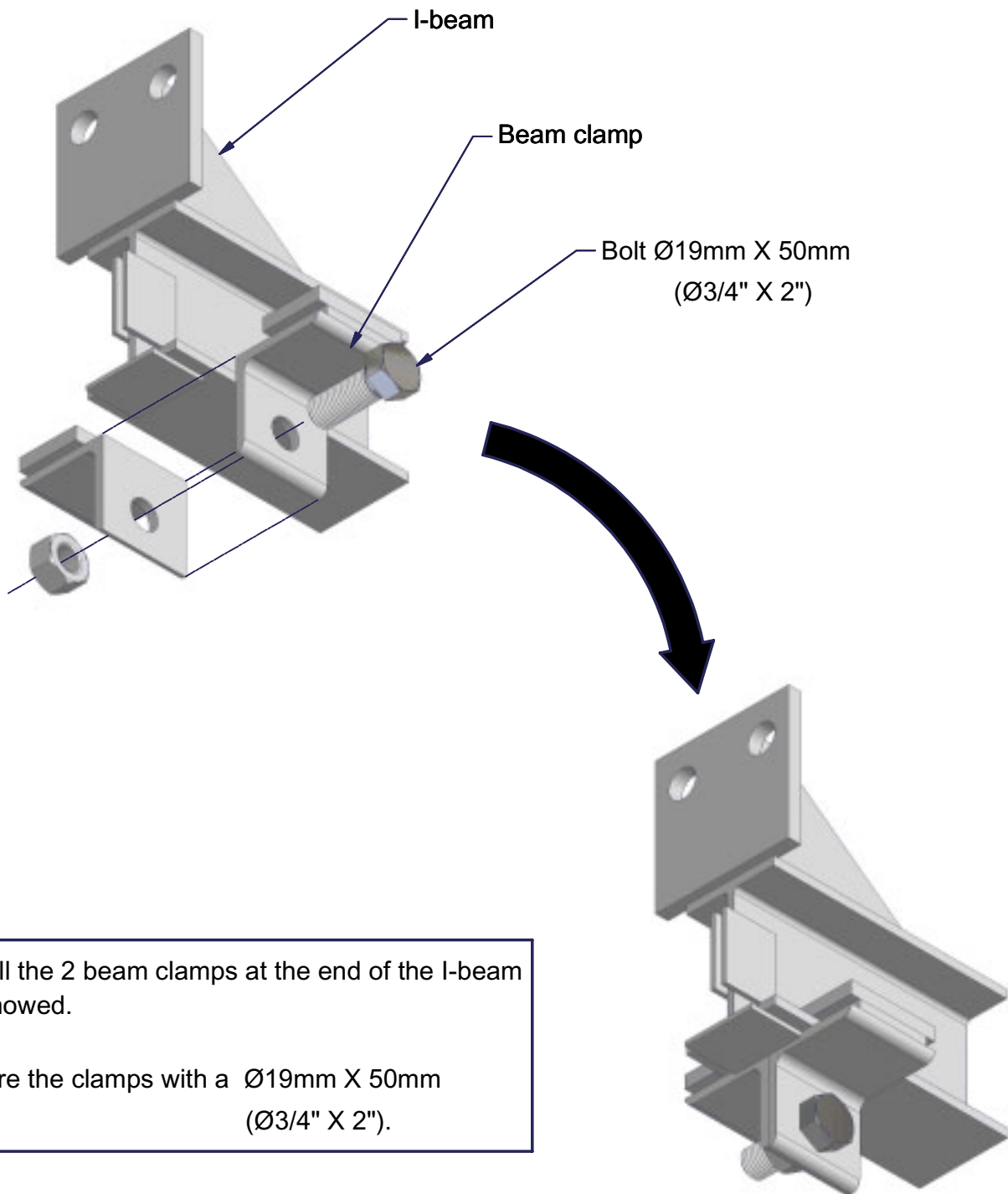
- 1-Install the Junction I-beam as showed and aligne its holes with the holes from the plate.
- 2-secure with 4 $\text{\O}19\text{mm} \times 50\text{mm}$ ($\text{\O}3/4" \times 2"$) bolts.

IMPORTANT

Always use junction I-beam where they might interfere with the anchors



Installing the end of I-beam block



Post and I-beam charts

Bridges	Number of posts needed		Number of I-beams needed		
	500 lbs capacity	1000 lbs capacity	7'	10'	Junction
60'	10	19	0	6	One 7' junction beam per hydraulic unit
60'+2'6"	11	20	2	5	
60'+2X2'6"	11	20	1	6	
55'	9	17	1	5	
55'+2'6"	10	18	0	6	
50'	8	15	0	5	
50'+2'6"	9	16	2	4	
50'+2X2'6"	10	18	1	5	
40'	7	13	0	4	
40'+2'6"	7	14	2	3	
40'+2X2'6"	7	14	2	3	
35'	6	11	1	3	
35'+2'6"	7	12	0	4	
35'+2X2'6"	7	13	0	4	
30'	5	9	0	3	
30'+2'6"	6	10	2	2	
30'+2X2'6"	6	11	1	3	
Extensions					
20'	3	6	0	2	
16'8"	3	5	1	1	
13'4"	3	4	1	1	
10'	2	3	0	1	
6'8"	2	2	0	1	
3'4"	2	2	1	0	